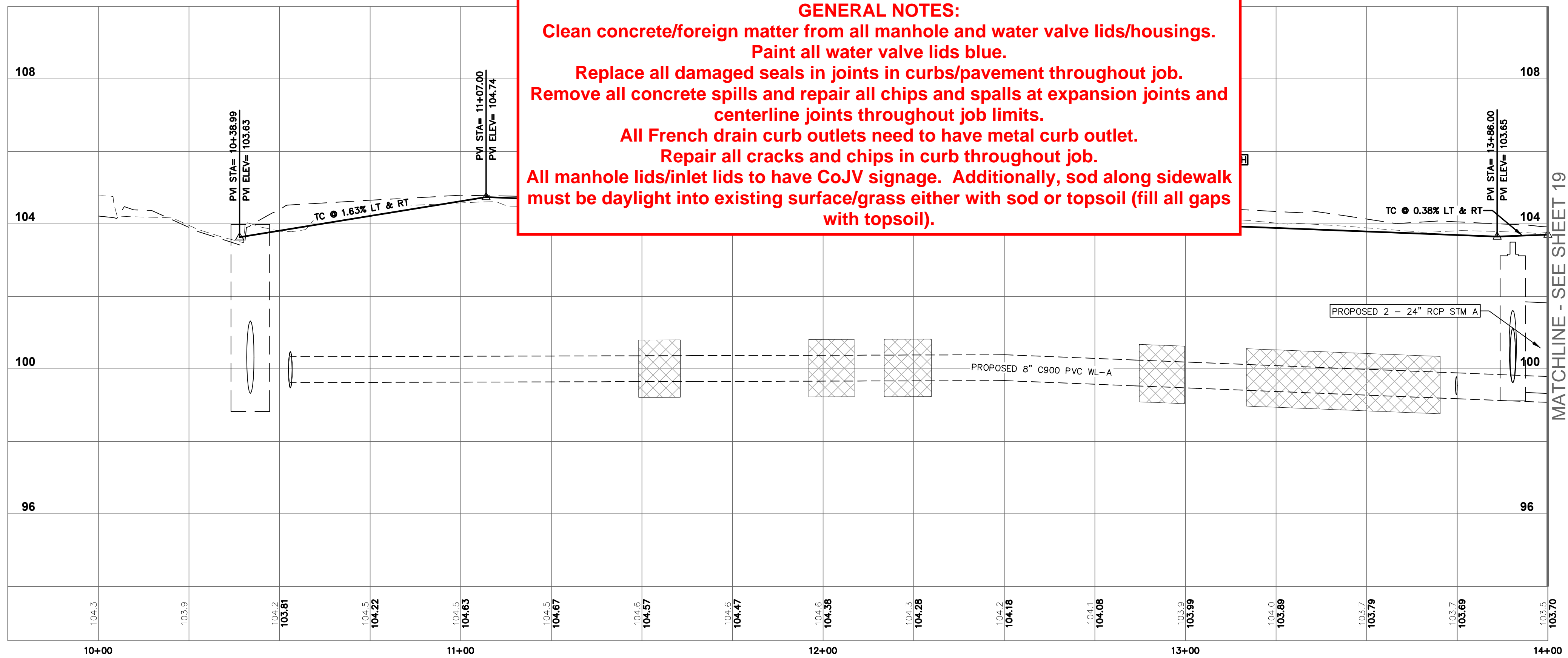
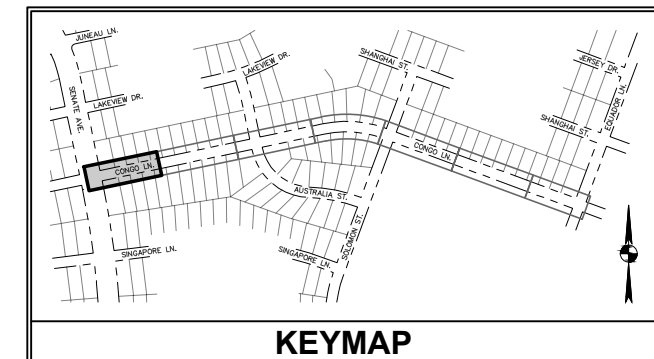
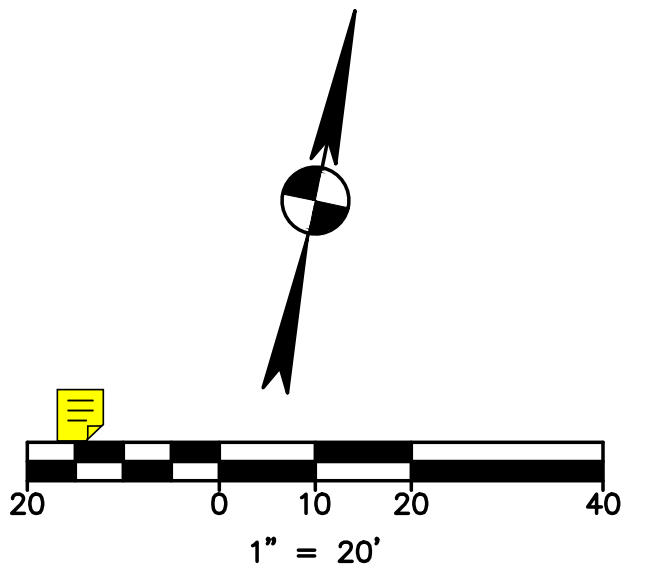


CONGO LANE



GENERAL NOTES:

- Clean concrete/foreign matter from all manhole and water valve lids/housings.
- Paint all water valve lids blue.
- Replace all damaged seals in joints in curbs/pavement throughout job.
- Remove all concrete spills and repair all chips and spalls at expansion joints and centerline joints throughout job limits.
- All French drain curb outlets need to have metal curb outlet.
- Repair all cracks and chips in curb throughout job.
- All manhole lids/inlet lids to have CoJV signage. Additionally, sod along sidewalk must be daylight into existing surface/grass either with sod or topsoil (fill all gaps with topsoil).



PLAN LEGEND		
EXISTING	PROPOSED	DESCRIPTION
		PROPERTY LINE / R.O.W. LINE
		LIGHT POLE
		POWER POLE
		GUY ANCHOR
		ELECTRIC PULL BOX
		SIGN
		FIRE HYDRANT
		WATER VALVE
		WATER METER
		FIRE DEPARTMENT CONNECTION
		GAS METER
		GAS VALVE
		GRATE INLET
		CURB INLET (SIZE VARIES)
		STORM MANHOLE (SIZE VARIES)
		STORM JUNCTION BOX (SIZE VARIES)
		WASTEWATER MANHOLE (SIZE VARIES)
		WASTEWATER CLEANOUT
		STORM SEWER LINE
		WATER LINE
		OVERHEAD ELECTRIC LINE
		ELECTRIC CONDUIT
		WATER LINE BORE CURB
		CONCRETE SIDEWALK
		TOP OF PAVEMENT (SPOT ELEVATION)
		TOP OF SIDEWALK (SPOT ELEVATION)
		TOP OF CURB (SPOT ELEVATION)
		GUTTER (SPOT ELEVATION)
		LIMITS OF CONSTRUCTION
		CONTOUR
		TREE

PROFILE LEGEND		PROFILE SCALE
	EXISTING GRADE	
	PROPOSED GRADE	
	ELEVATION AT TOP OF CURB	
	ELEVATION AT TOP OF CURB	



NOTICE: FOR YOUR SAFETY, YOU ARE REQUIRED BY TEXAS LAW TO CALL 811 AT LEAST 48 HOURS BEFORE YOU DIG SO THAT UNDERGROUND LINES CAN BE MARKED. THIS SIGNATURE DOES NOT FULFILL YOUR OBLIGATION TO CALL 811.	
VERIFICATION OF PRIVATE UTILITY LINES	
DATE	
CENTERPOINT ENERGY NATURAL GAS UTILITIES SHOWN. (GAS SERVICE LINES ARE NOT SHOWN). THIS SIGNATURE NOT TO BE USED FOR CONFLICT VERIFICATION. SIGNATURE VALID FOR SIX MONTHS.	
DATE	
CENTERPOINT ENERGY/UNDERGROUND ELECTRICAL FACILITIES VERIFICATION ONLY. (THIS SIGNATURE VERIFIES EXISTING UNDERGROUND FACILITIES - NOT TO BE USED FOR CONFLICT VERIFICATION.) SIGNATURE VALID FOR SIX MONTHS.	
DATE	
APPROVED FOR AT&T TEXAS/SWBT UNDERGROUND CONDUIT FACILITIES ONLY. SIGNATURE VALID FOR ONE YEAR.	
CONTACT CENTERPOINT ENERGY AT 713-207-2222 TO ARRANGE FOR LINES TO BE TURNED OFF OR MOVED.	
FOR YOUR SAFETY, YOU ARE REQUIRED BY TEXAS LAW TO CALL 811 AT LEAST 48 HOURS BEFORE YOU DIG SO THAT UNDERGROUND LINES CAN BE MARKED. THE SIGNATURES BELOW DO NOT FULFILL YOUR OBLIGATION TO CALL 811.	
THE SIGNATURES BELOW ARE NOT TO BE USED FOR CONFLICT VERIFICATION.	
CITY OF JERSEY VILLAGE FIRE DEPARTMENT	DATE
JERSEY VILLAGE PUBLIC WORKS DEPARTMENT	DATE

7700 Riello Blvd., Suite 125
Austin, Texas 78735
Tel: (512) 299-3284 Fax: (512) 298-2592
TBP# F-14629
Garza EMC, LLC © Copyright 2024

CITY OF JERSEY VILLAGE
A TEXAS STAR COMMUNITY

BILAL A. ALJAZI
92792
03-22-2024

CONGO LANE RECONSTRUCTION, UTILITY & DRAINAGE IMPROVEMENTS

PLAN & PROFILE

STA. 10+00 TO 14+00

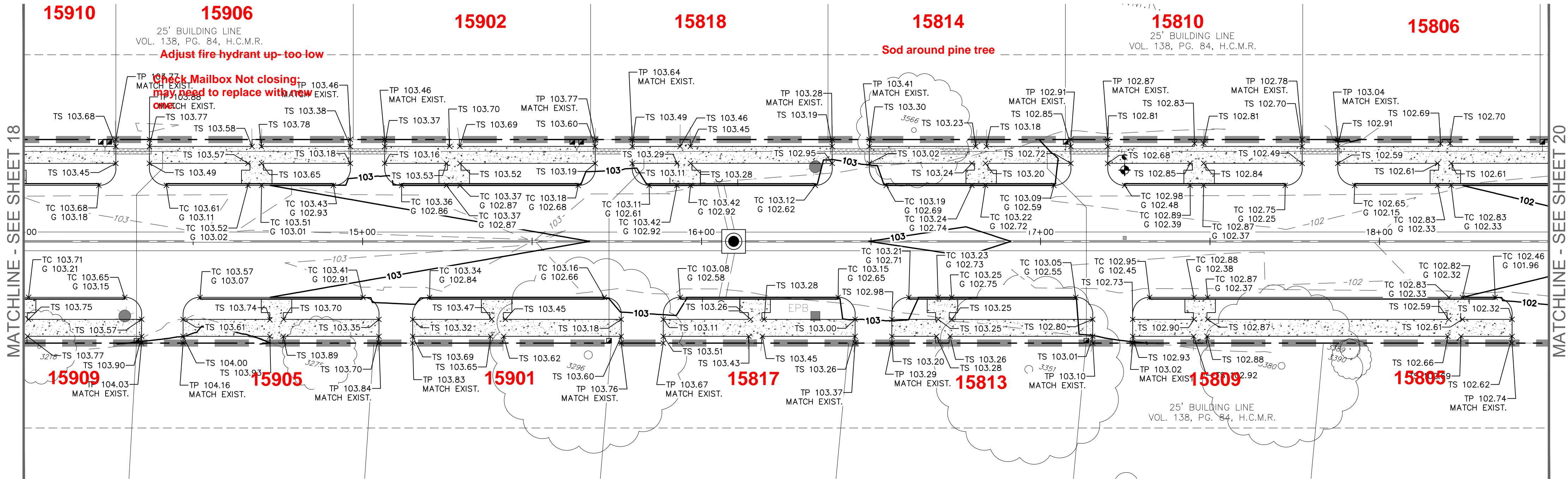
CITY OF JERSEY VILLAGE

DRAWN BY:	CM, RC
DESIGNED BY:	BAA, PG
QA / QC:	BAA
PROJECT NO.:	113756-00002

SHEET

18

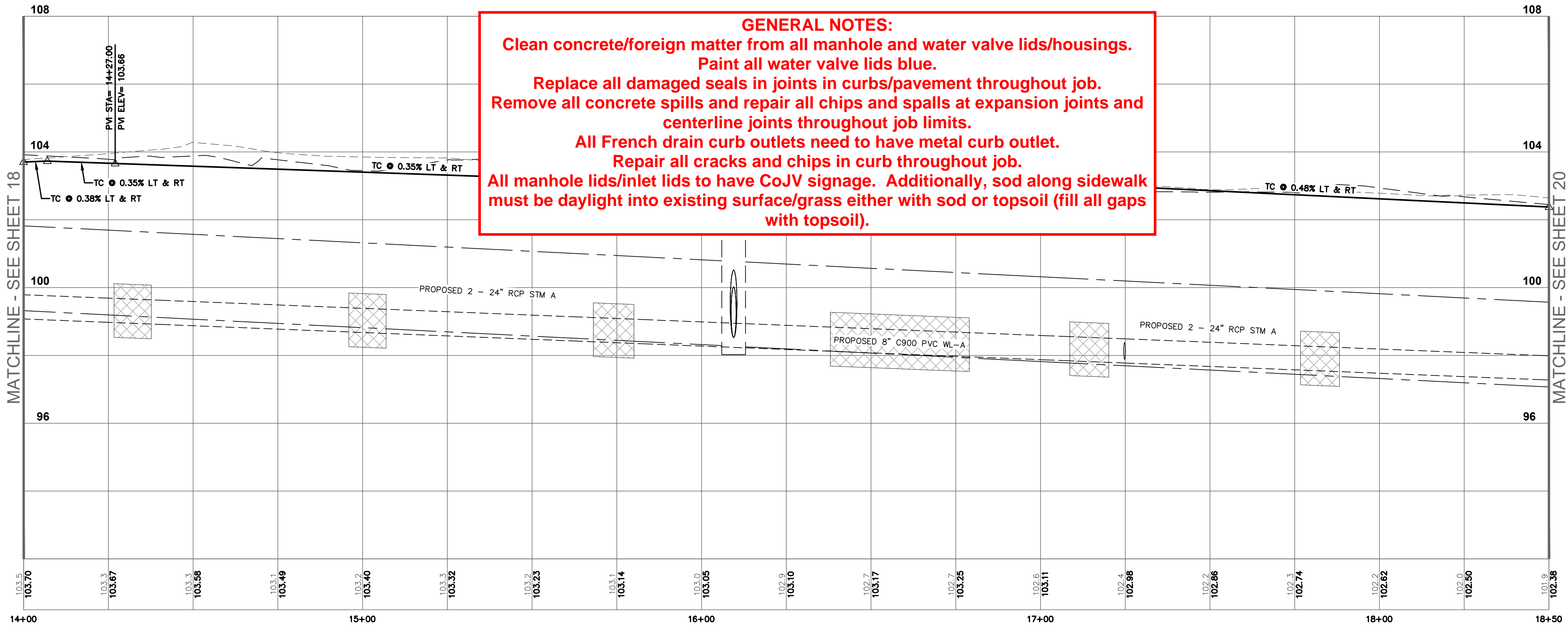
OF 67



CONGO LANE

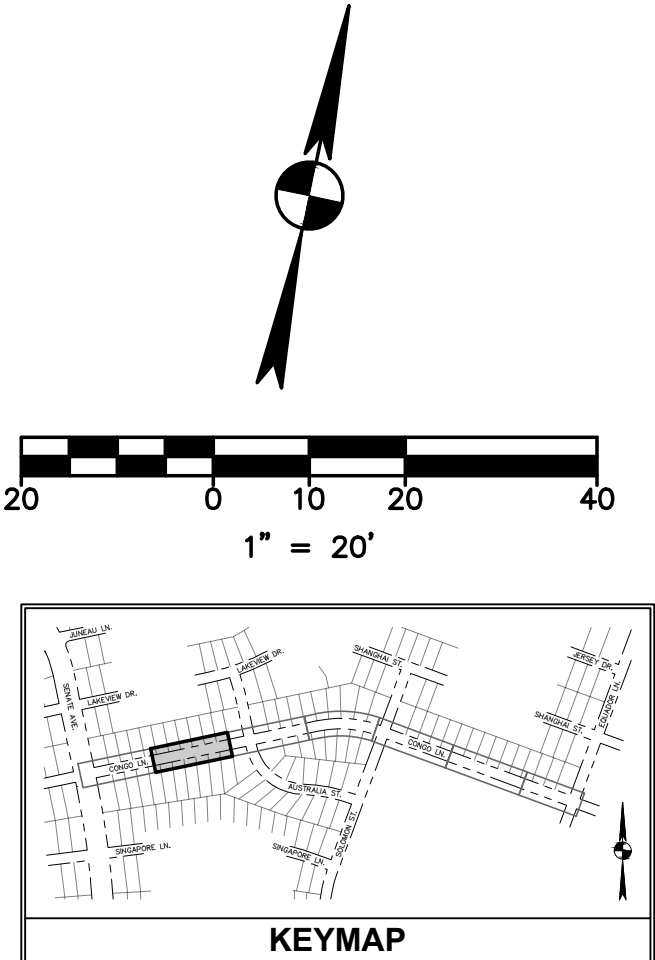
NOTE:

- THE ROAD PAVEMENT SECTION AND SUBGRADE MUST BE DESIGNED TO HARRIS COUNTY'S PUBLIC INFRASTRUCTURE REQUIREMENTS AND THE GEOTECH REPORT PROVIDED BY RINER ENGINEERING UNDER PROJECT NUMBER 22-0291.
- GEOTECH SPECIFICATIONS:
6 INCH REINFORCED CONCRETE PAVEMENT WITH COMPRESSIVE STRENGTH AT 3,500 PSI ON 6 INCH OF LIME STABILIZED SUBGRADE. LIME TO BE STABILIZED PER HARRIS COUNTY SPECIFICATIONS ITEM 220 AND 221.



GENERAL NOTES:

- Clean concrete/foreign matter from all manhole and water valve lids/housings.
- Paint all water valve lids blue.
- Replace all damaged seals in joints in curbs/pavement throughout job.
- Remove all concrete spills and repair all chips and spalls at expansion joints and centerline joints throughout job limits.
- All French drain curb outlets need to have metal curb outlet.
- Repair all cracks and chips in curb throughout job.
- All manhole lids/inlet lids to have CoJV signage. Additionally, sod along sidewalk must be daylight into existing surface/grass either with sod or topsoil (fill all gaps with topsoil).



PLAN LEGEND		
EXISTING	PROPOSED	DESCRIPTION
		PROPERTY LINE / R.O.W. LINE
		LIGHT POLE
		POWER POLE
		GUY ANCHOR
		ELECTRIC PULL BOX
		SIGN
		FIRE HYDRANT
		WATER VALVE
		WATER METER
		FIRE DEPARTMENT CONNECTION
		GAS METER
		GAS VALVE
		GRATE INLET
		CURB INLET (SIZE VARIES)
		STORM MANHOLE (SIZE VARIES)
		STORM JUNCTION BOX (SIZE VARIES)
		WASTEWATER MANHOLE (SIZE VARIES)
		WASTEWATER CLEANOUT
		STORM SEWER LINE
		WATER LINE
		OVERHEAD ELECTRIC LINE
		ELECTRIC CONDUIT
		WATER LINE BORE CURB
		CONCRETE SIDEWALK
		TOP OF PAVEMENT (SPOT ELEVATION)
		TOP OF SIDEWALK (SPOT ELEVATION)
		TOP OF CURB (SPOT ELEVATION)
		GUTTER (SPOT ELEVATION)
		LIMITS OF CONSTRUCTION
		CONTOUR
		TREE

PROFILE LEGEND		PROFILE SCALE
	EXISTING GRADE AT NORTH R.O.W.	
	EXISTING GRADE AT SOUTH R.O.W.	
	PROPOSED GRADE AT TOP OF CURB (LEFT & RIGHT)	
	ELEVATION AT TOP OF CURB	



NOTICE: FOR YOUR SAFETY, YOU ARE REQUIRED BY TEXAS LAW TO CALL 811 AT LEAST 48 HOURS BEFORE YOU DIG SO THAT UNDERGROUND LINES CAN BE MARKED. THIS SIGNATURE DOES NOT FULFILL YOUR OBLIGATION TO CALL 811.

VERIFICATION OF PRIVATE UTILITY LINES

DATE

CENTERPOINT ENERGY NATURAL GAS UTILITIES SHOWN. (GAS SERVICE LINES ARE NOT SHOWN). THIS SIGNATURE NOT TO BE USED FOR CONFLICT VERIFICATION. SIGNATURE VALID FOR SIX MONTHS.

DATE

CENTERPOINT ENERGY UNDERGROUND ELECTRICAL FACILITIES VERIFICATION ONLY. (THIS SIGNATURE VERIFIES EXISTING UNDERGROUND FACILITIES - NOT TO BE USED FOR CONFLICT VERIFICATION.) SIGNATURE VALID FOR SIX MONTHS.

DATE

APPROVED FOR AT&T TEXAS/SWBT UNDERGROUND CONDUIT FACILITIES ONLY. SIGNATURE VALID FOR ONE YEAR.

CONTACT CENTERPOINT ENERGY AT 713-207-2222 TO ARRANGE FOR LINES TO BE TURNED OFF OR MOVED.

FOR YOUR SAFETY, YOU ARE REQUIRED BY TEXAS LAW TO CALL 811 AT LEAST 48 HOURS BEFORE YOU DIG SO THAT UNDERGROUND LINES CAN BE MARKED. THE SIGNATURES BELOW DO NOT FULFILL YOUR OBLIGATION TO CALL 811.

THE SIGNATURES BELOW ARE NOT TO BE USED FOR CONFLICT VERIFICATION.

CITY OF JERSEY VILLAGE FIRE DEPARTMENT DATE

JERSEY VILLAGE PUBLIC WORKS DEPARTMENT DATE

7708 Relio Blvd., Suite 125
Austin, Texas 78735
Tel. (512) 299-3284 Fax. (512) 298-2592
TBP# F-14629
Garza EMC, LLC © Copyright, 2024

CITY OF JERSEY VILLAGE
TEXAS STAR COMMUNITY

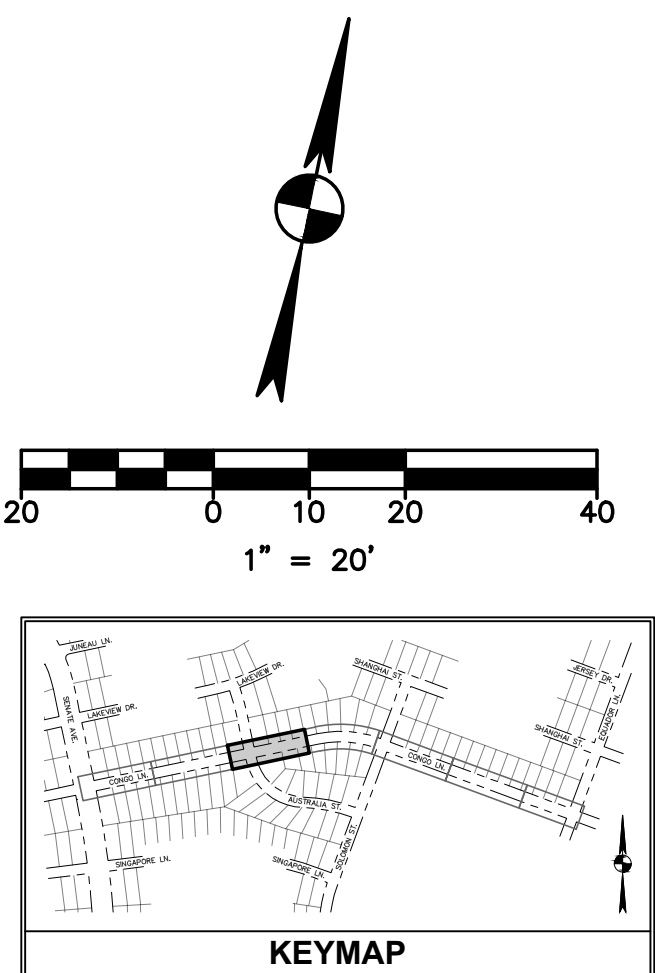
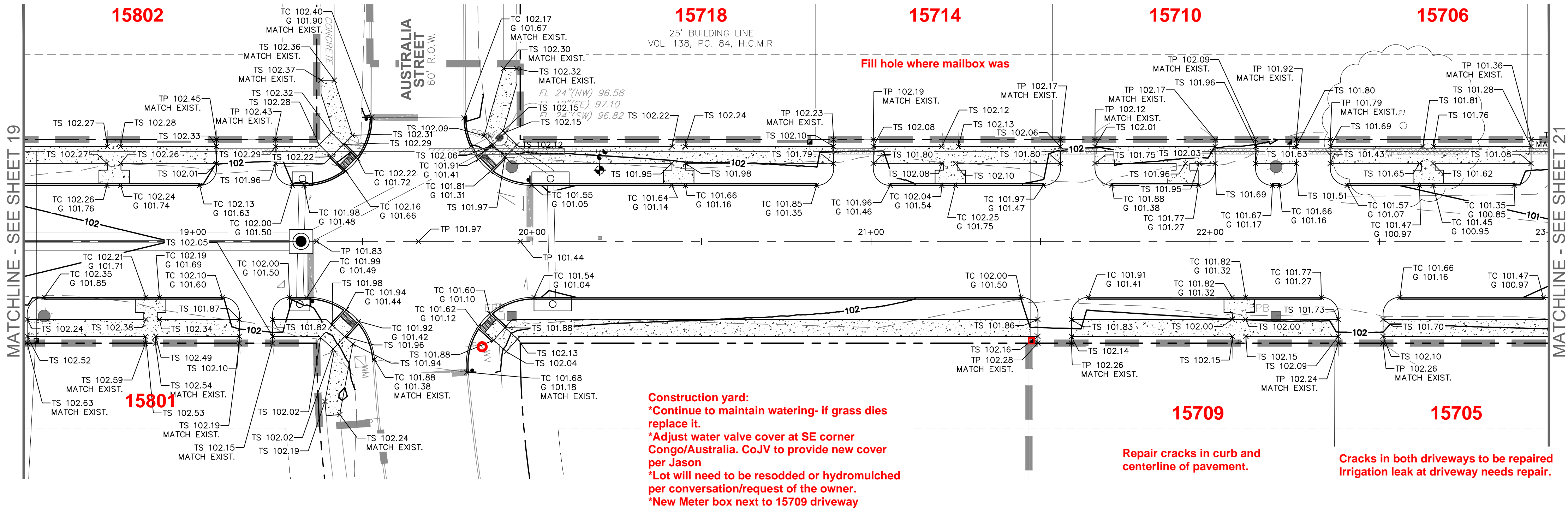
BILAL A. ALJAZI
92792
PROFESSIONAL ENGINEER
03-22-2024

CONGO LANE RECONSTRUCTION,
UTILITY & DRAINAGE IMPROVEMENTS

CITY OF JERSEY VILLAGE

DRAWN BY: CM, RC
DESIGNED BY: BAA, PG
QA / QC: BAA
PROJECT NO.: 113756-00002

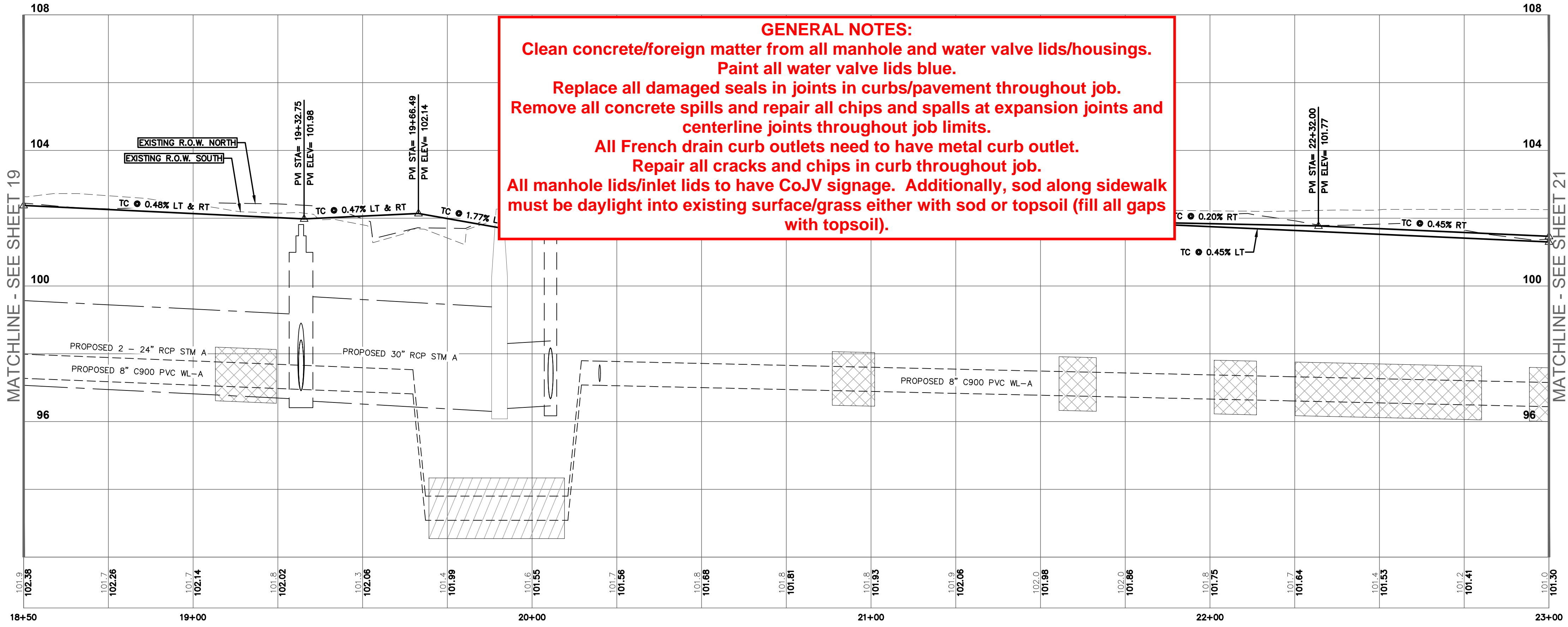
SHEET
19
OF 67



PLAN LEGEND		
EXISTING	PROPOSED	DESCRIPTION
		PROPERTY LINE / R.O.W. LINE
		LIGHT POLE
		POWER POLE
		GUY ANCHOR
		ELECTRIC PULL BOX
		SIGN
		FIRE HYDRANT
		WATER VALVE
		WATER METER
		FIRE DEPARTMENT CONNECTION
		GAS METER
		GAS VALVE
		GRATE INLET
		CURB INLET (SIZE VARIES)
		STORM MANHOLE (SIZE VARIES)
		STORM JUNCTION BOX (SIZE VARIES)
		WASTEWATER MANHOLE (SIZE VARIES)
		WASTEWATER CLEANOUT
		STORMSEWER LINE
		WATER LINE
		OVERHEAD ELECTRIC LINE
		ELECTRIC CONDUIT
		WATER LINE BORE
		CURB
		CONCRETE SIDEWALK
		TOP OF PAVEMENT (SPOT ELEVATION)
		TOP OF SIDEWALK (SPOT ELEVATION)
		TOP OF CURB (SPOT ELEVATION)
		GUTTER (SPOT ELEVATION)
		LIMITS OF CONSTRUCTION
		CONTOUR
		TREE

NOTE:
1. THE ROAD PAVEMENT SECTION AND SUBGRADE MUST BE DESIGNED TO HARRIS COUNTY'S PUBLIC INFRASTRUCTURE REQUIREMENTS AND THE GEOTECH REPORT PROVIDED BY RINER ENGINEERING UNDER PROJECT NUMBER 22-0291.
2. GEOTECH SPECIFICATIONS:
6 INCH REINFORCED CONCRETE PAVEMENT WITH COMPRESSIVE STRENGTH AT 3,500 PSI ON 6 INCH OF LIME STABILIZED SUBGRADE. LIME TO BE STABILIZED PER HARRIS COUNTY SPECIFICATIONS ITEM 220 AND 221.

CONGO LANE



GENERAL NOTES:
Clean concrete/foreign matter from all manhole and water valve lids/housings.
Paint all water valve lids blue.
Replace all damaged seals in joints in curbs/pavement throughout job.
Remove all concrete spills and repair all chips and spalls at expansion joints and centerline joints throughout job limits.
All French drain curb outlets need to have metal curb outlet.
Repair all cracks and chips in curb throughout job.
All manhole lids/inlet lids to have CoJV signage. Additionally, sod along sidewalk must be daylight into existing surface/grass either with sod or topsoil (fill all gaps with topsoil).

PROFILE LEGEND		PROFILE SCALE
	EXISTING GRADE	
	EXISTING GRADE AT NORTH R.O.W.	
	EXISTING GRADE AT SOUTH R.O.W.	
	PROPOSED GRADE	
	EXISTING GRADE AT TOP OF CURB	
	PROPOSED GRADE AT TOP OF CURB	



NOTICE:
FOR YOUR SAFETY, YOU ARE REQUIRED BY TEXAS LAW TO CALL 811 AT LEAST 48 HOURS BEFORE YOU DIG SO THAT UNDERGROUND LINES CAN BE MARKED. THIS SIGNATURE DOES NOT FULFILL YOUR OBLIGATION TO CALL 811.

VERIFICATION OF PRIVATE UTILITY LINES

DATE _____

CENTERPOINT ENERGY NATURAL GAS UTILITIES SHOWN. (GAS SERVICE LINES ARE NOT SHOWN). THIS SIGNATURE NOT TO BE USED FOR CONFLICT VERIFICATION. SIGNATURE VALID FOR SIX MONTHS.

DATE _____

CENTERPOINT ENERGY/UNDERGROUND ELECTRICAL FACILITIES VERIFICATION ONLY. (THIS SIGNATURE VERIFIES EXISTING UNDERGROUND FACILITIES - NOT TO BE USED FOR CONFLICT VERIFICATION.) SIGNATURE VALID FOR SIX MONTHS.

DATE _____

APPROVED FOR AT&T TEXAS/SWBT UNDERGROUND CONDUIT FACILITIES ONLY. SIGNATURE VALID FOR ONE YEAR.

CONTACT CENTERPOINT ENERGY AT 713-207-2222 TO ARRANGE FOR LINES TO BE TURNED OFF OR MOVED.

FOR YOUR SAFETY, YOU ARE REQUIRED BY TEXAS LAW TO CALL 811 AT LEAST 48 HOURS BEFORE YOU DIG SO THAT UNDERGROUND LINES CAN BE MARKED. THE SIGNATURES BELOW DO NOT FULFILL YOUR OBLIGATION TO CALL 811.

THE SIGNATURES BELOW ARE NOT TO BE USED FOR CONFLICT VERIFICATION.

CITY OF JERSEY VILLAGE FIRE DEPARTMENT	DATE
JERSEY VILLAGE PUBLIC WORKS DEPARTMENT	DATE

7708 Riello Blvd., Suite 125
Austin, Texas 78735
Tel. (512) 299-3284 Fax. (512) 298-2592
TBP# F-14629
Garza EMC, LLC © Copyright 2024

CITY OF JERSEY VILLAGE
A TEXAS STAR COMMUNITY

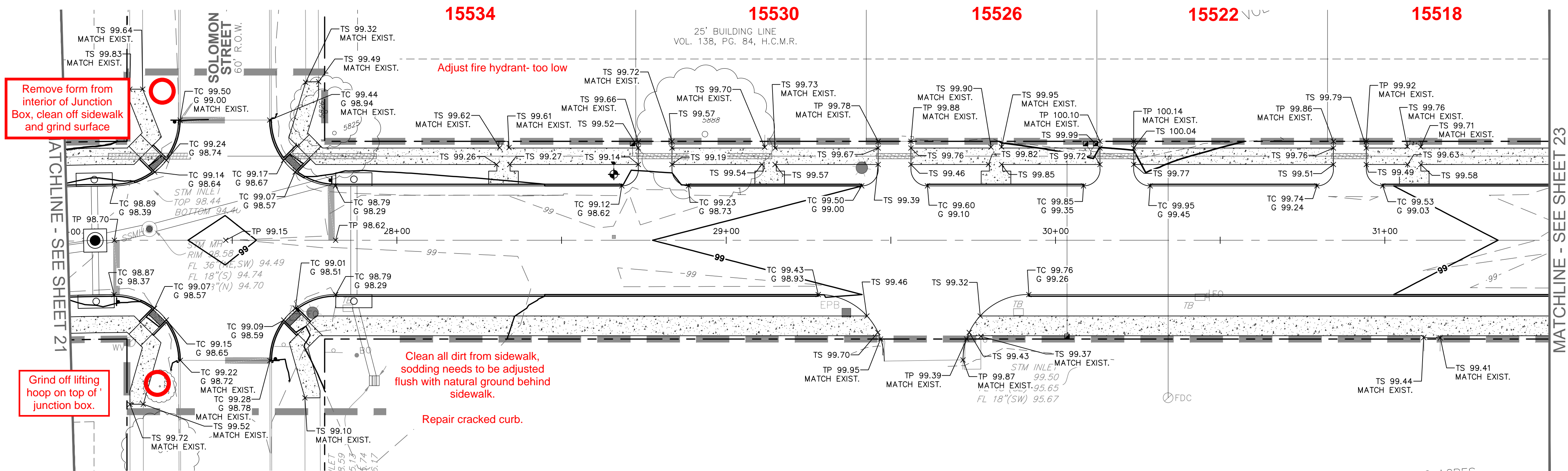
BILAL A. ALJAZI
92792
PROFESSIONAL ENGINEER
03-22-2024

CONGO LANE RECONSTRUCTION,
UTILITY & DRAINAGE IMPROVEMENTS

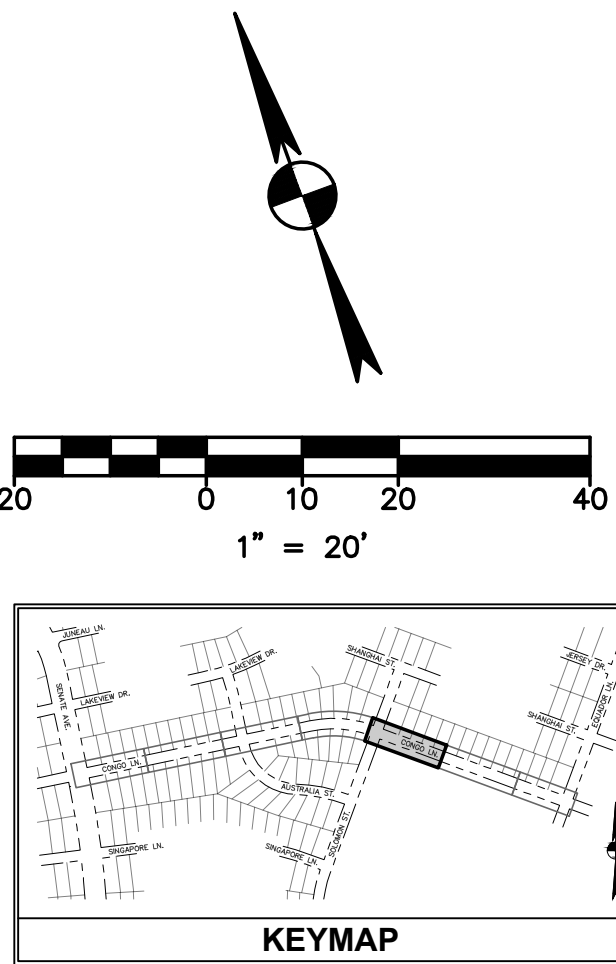
CITY OF JERSEY VILLAGE

DRAWN BY: CM, RC
DESIGNED BY: BAA, PG
QA / QC: BAA
PROJECT NO.: 113756-00002

SHEET
20
OF 67



CONGO LANE



PLAN LEGEND		
EXISTING	PROPOSED	DESCRIPTION
		PROPERTY LINE / R.O.W. LINE
		LIGHT POLE
		POWER POLE
		GUY ANCHOR
		ELECTRIC PULL BOX
		SIGN
		FIRE HYDRANT
		WATER VALVE
		WATER METER
		FIRE DEPARTMENT CONNECTION
		GAS METER
		GAS VALVE
		GRATE INLET
		STORM MANHOLE (SIZE VARIES)
		STORM JUNCTION BOX (SIZE VARIES)
		WASTEWATER MANHOLE (SIZE VARIES)
		WASTEWATER CLEANOUT
		STORM SEWER LINE
		WATER LINE
		OVERHEAD ELECTRIC LINE
		ELECTRIC CONDUIT
		WATER LINE BORE
		CURB
		CONCRETE SIDEWALK
	TP	TOP OF PAVEMENT (SPOT ELEVATION)
	TS	TOP OF SIDEWALK (SPOT ELEVATION)
	TC	TOP OF CURB (SPOT ELEVATION)
	G	GUTTER (SPOT ELEVATION)
		LIMITS OF CONSTRUCTION
		CONTOUR
		TREE

- NOTE:
- THE ROAD PAVEMENT SECTION AND SUBGRADE MUST BE DESIGNED TO HARRIS COUNTY'S PUBLIC INFRASTRUCTURE REQUIREMENTS AND THE GEOTECH REPORT PROVIDED BY RINER ENGINEERING UNDER PROJECT NUMBER 22-0291.
 - GEOTECH SPECIFICATIONS:
6 INCH REINFORCED CONCRETE PAVEMENT WITH COMPRESSIVE STRENGTH AT 3,500 PSI ON 6 INCH OF LIME STABILIZED SUBGRADE. LIME TO BE STABILIZED PER HARRIS COUNTY SPECIFICATIONS ITEM 220 AND 221.

PROFILE LEGEND		PROFILE SCALE
	EXISTING GRADE	 HORIZONTAL 1" = 20'
	PROPOSED GRADE	
	ELEVATION	 VERTICAL 1" = 2'
	EXISTING GRADE AT TOP OF CURB	



GENERAL NOTES:

Clean concrete/foreign matter from all manhole and water valve lids/housings.

Paint all water valve lids blue.

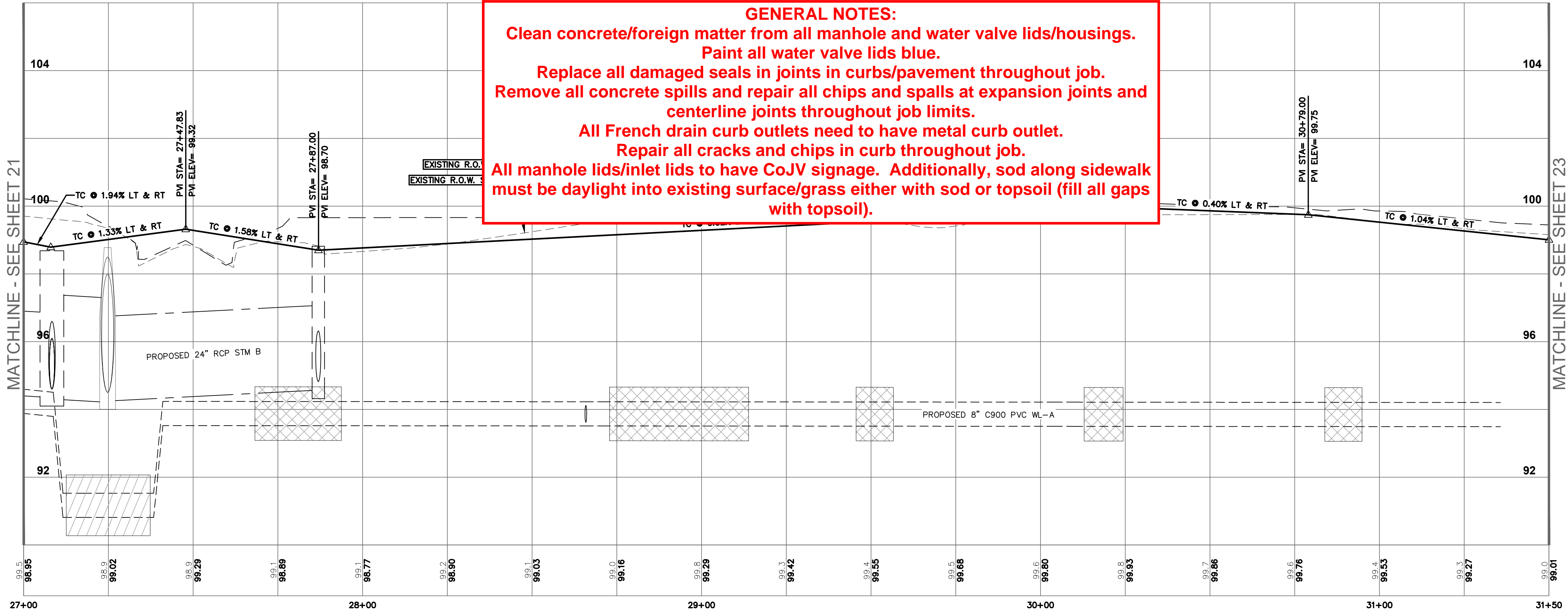
Replace all damaged seals in joints in curbs/pavement throughout job.

Remove all concrete spills and repair all chips and spalls at expansion joints and centerline joints throughout job limits.

All French drain curb outlets need to have metal curb outlet.

Repair all cracks and chips in curb throughout job.

All manhole lids/inlet lids to have CoJV signage. Additionally, sod along sidewalk must be daylight into existing surface/grass either with sod or topsoil (fill all gaps with topsoil).



NOTICE: FOR YOUR SAFETY, YOU ARE REQUIRED BY TEXAS LAW TO CALL 811 AT LEAST 48 HOURS BEFORE YOU DIG SO THAT UNDERGROUND LINES CAN BE MARKED. THIS SIGNATURE DOES NOT FULFILL YOUR OBLIGATION TO CALL 811.

VERIFICATION OF PRIVATE UTILITY LINES

DATE

CENTERPOINT ENERGY NATURAL GAS UTILITIES SHOWN. (GAS SERVICE LINES ARE NOT SHOWN). THIS SIGNATURE NOT TO BE USED FOR CONFLICT VERIFICATION. SIGNATURE VALID FOR SIX MONTHS.

DATE

CENTERPOINT ENERGY UNDERGROUND ELECTRICAL FACILITIES VERIFICATION ONLY. (THIS SIGNATURE VERIFIES EXISTING UNDERGROUND FACILITIES - NOT TO BE USED FOR CONFLICT VERIFICATION.) SIGNATURE VALID FOR SIX MONTHS.

DATE

APPROVED FOR AT&T TEXAS/SWBT UNDERGROUND CONDUIT FACILITIES ONLY. SIGNATURE VALID FOR ONE YEAR.

CONTACT CENTERPOINT ENERGY AT 713-207-2222 TO ARRANGE FOR LINES TO BE TURNED OFF OR MOVED.

FOR YOUR SAFETY, YOU ARE REQUIRED BY TEXAS LAW TO CALL 811 AT LEAST 48 HOURS BEFORE YOU DIG SO THAT UNDERGROUND LINES CAN BE MARKED. THE SIGNATURES BELOW DO NOT FULFILL YOUR OBLIGATION TO CALL 811.

THE SIGNATURES BELOW ARE NOT TO BE USED FOR CONFLICT VERIFICATION.

CITY OF JERSEY VILLAGE FIRE DEPARTMENT DATE

JERSEY VILLAGE PUBLIC WORKS DEPARTMENT DATE

7708 Riello Blvd., Suite 125
Austin, Texas 78735
Tel: (512) 299-3284 Fax: (512) 298-2592
TBP# F-14629
Garza EMC, LLC © Copyright 2024

CITY OF JERSEY VILLAGE
TEXAS STAR COMMUNITY

03-22-2024

CONGO LANE RECONSTRUCTION,
UTILITY & DRAINAGE IMPROVEMENTS

CITY OF JERSEY VILLAGE

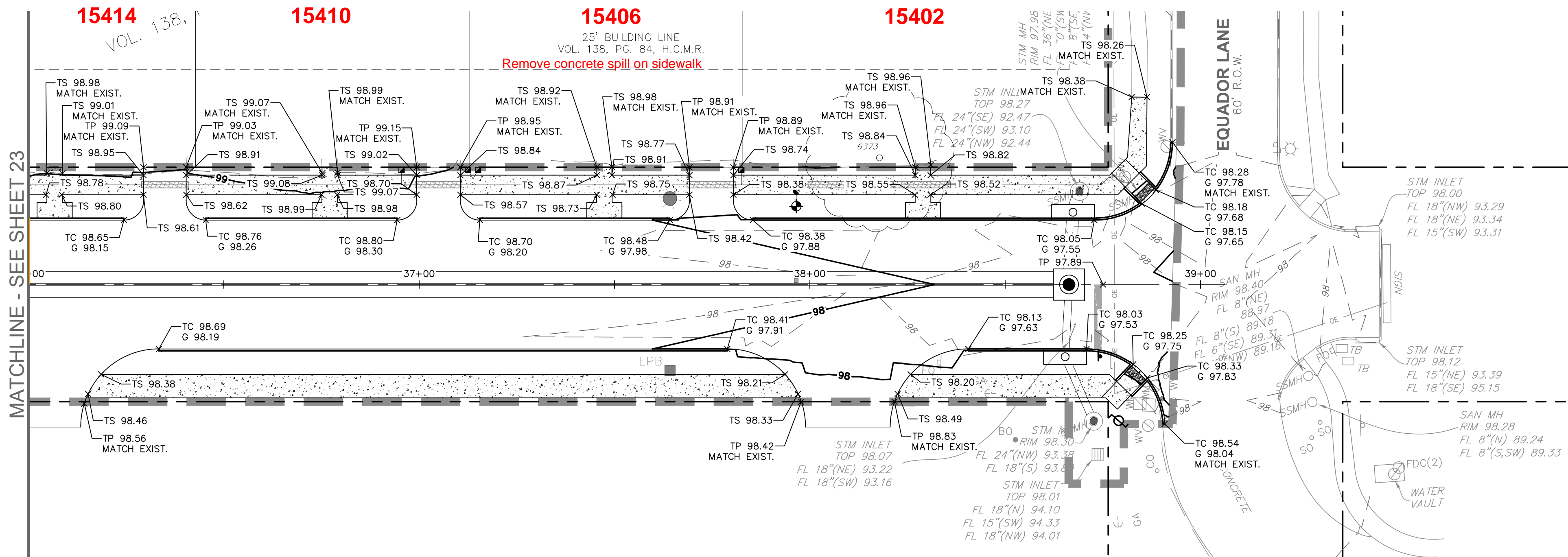
DRAWN BY: CM, RC

DESIGNED BY: BAA, PG

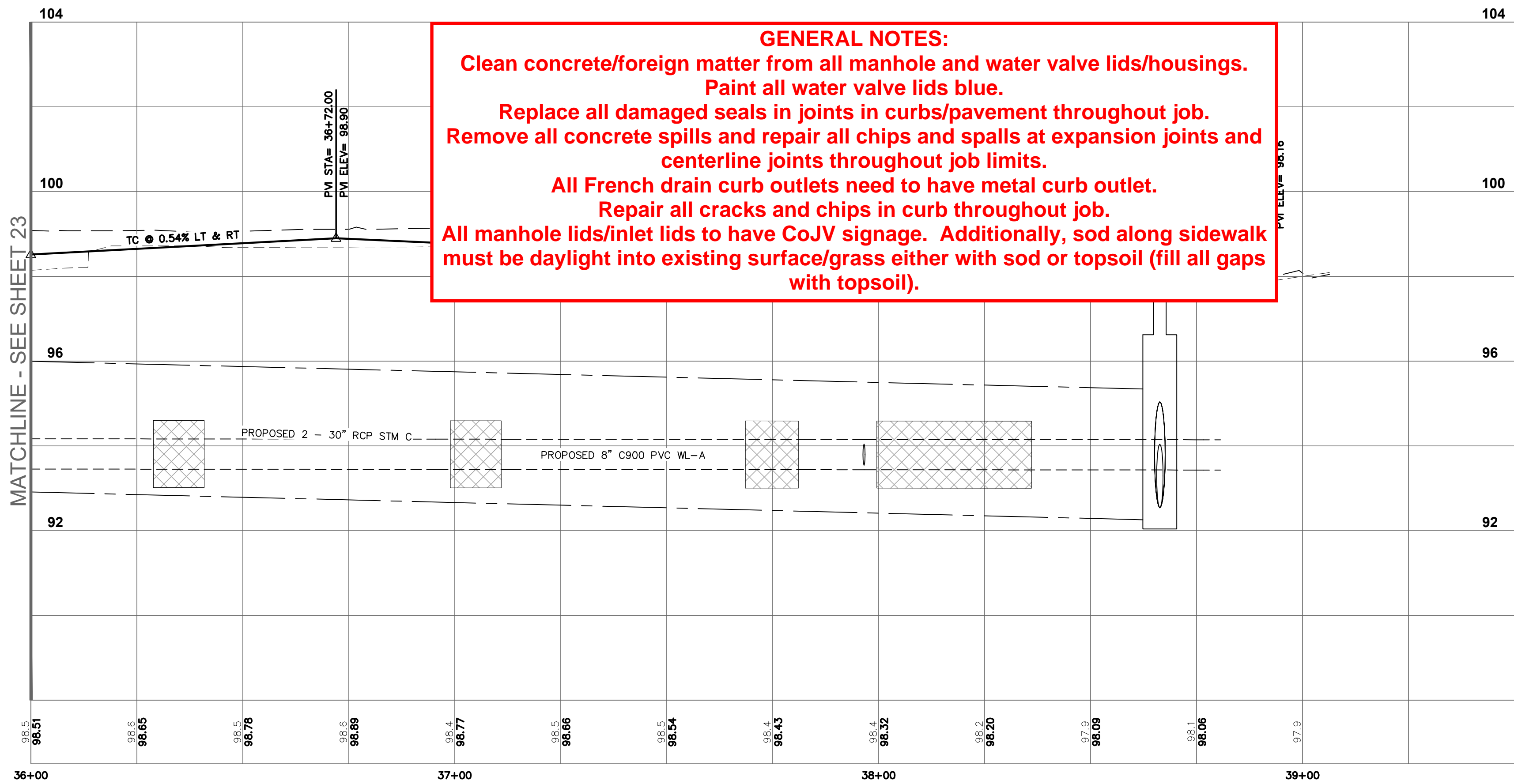
QA / QC: BAA

PROJECT NO.: 113756-00002

SHEET
22
OF 67

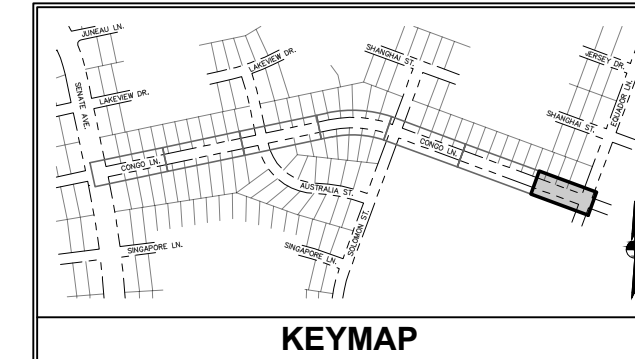
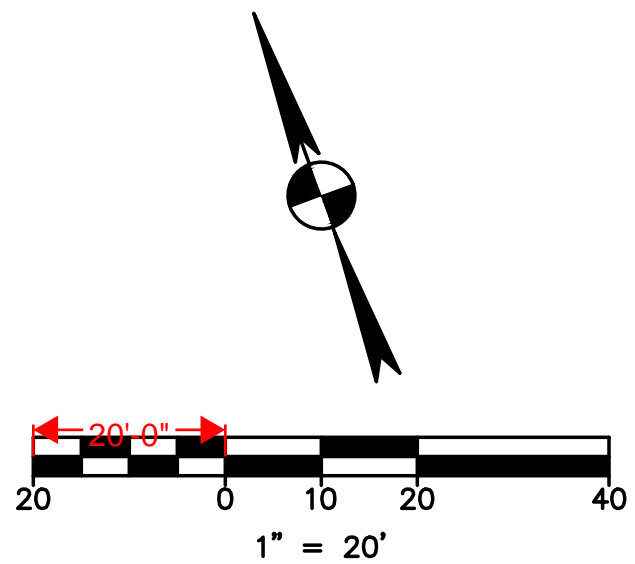


CONGO LANE



GENERAL NOTES:

- Clean concrete/foreign matter from all manhole and water valve lids/housings.
- Paint all water valve lids blue.
- Replace all damaged seals in joints in curbs/pavement throughout job.
- Remove all concrete spills and repair all chips and spalls at expansion joints and centerline joints throughout job limits.
- All French drain curb outlets need to have metal curb outlet.
- Repair all cracks and chips in curb throughout job.
- All manhole lids/inlet lids to have CoJV signage. Additionally, sod along sidewalk must be daylight into existing surface/grass either with sod or topsoil (fill all gaps with topsoil).



PLAN LEGEND		
EXISTING	PROPOSED	DESCRIPTION
		PROPERTY LINE / R.O.W. LINE
		LIGHT POLE
		POWER POLE
		GUY ANCHOR
		ELECTRIC PULL BOX
		SIGN
		FIRE HYDRANT
		WATER VALVE
		WATER METER
		FIRE DEPARTMENT CONNECTION
		GAS METER
		GAS VALVE
		GRATE INLET
		CURB INLET (SIZE VARIES)
		STORM MANHOLE (SIZE VARIES)
		STORM JUNCTION BOX (SIZE VARIES)
		WASTEWATER MANHOLE (SIZE VARIES)
		WASTEWATER CLEANOUT
		STORM SEWER LINE
		WATER LINE
		OVERHEAD ELECTRIC LINE
		ELECTRIC CONDUIT
		WATER LINE BORE CURB
		CONCRETE SIDEWALK
		TOP OF PAVEMENT (SPOT ELEVATION)
		TOP OF SIDEWALK (SPOT ELEVATION)
		TOP OF CURB (SPOT ELEVATION)
		GUTTER (SPOT ELEVATION)
		LIMITS OF CONSTRUCTION
		CONTOUR
		TREE

PROFILE LEGEND		PROFILE SCALE
	EXISTING GRADE	
	PROPOSED GRADE	
	ELEVATION	
	EXISTING GRADE AT TOP OF CURB	



NOTICE: FOR YOUR SAFETY, YOU ARE REQUIRED BY TEXAS LAW TO CALL 811 AT LEAST 48 HOURS BEFORE YOU DIG SO THAT UNDERGROUND LINES CAN BE MARKED. THIS SIGNATURE DOES NOT FULFILL YOUR OBLIGATION TO CALL 811.	
VERIFICATION OF PRIVATE UTILITY LINES	
DATE	
CENTERPOINT ENERGY NATURAL GAS UTILITIES SHOWN. (GAS SERVICE LINES ARE NOT SHOWN). THIS SIGNATURE NOT TO BE USED FOR CONFLICT VERIFICATION. SIGNATURE VALID FOR SIX MONTHS.	
DATE	
CENTERPOINT ENERGY/UNDERGROUND ELECTRICAL FACILITIES VERIFICATION ONLY. (THIS SIGNATURE VERIFIES EXISTING UNDERGROUND FACILITIES - NOT TO BE USED FOR CONFLICT VERIFICATION.) SIGNATURE VALID FOR SIX MONTHS.	
DATE	
APPROVED FOR AT&T TEXAS/SWBT UNDERGROUND CONDUIT FACILITIES ONLY. SIGNATURE VALID FOR ONE YEAR.	
CONTACT CENTERPOINT ENERGY AT 713-207-2222 TO ARRANGE FOR LINES TO BE TURNED OFF OR MOVED.	
FOR YOUR SAFETY, YOU ARE REQUIRED BY TEXAS LAW TO CALL 811 AT LEAST 48 HOURS BEFORE YOU DIG SO THAT UNDERGROUND LINES CAN BE MARKED. THE SIGNATURES BELOW DO NOT FULFILL YOUR OBLIGATION TO CALL 811.	
THE SIGNATURES BELOW ARE NOT TO BE USED FOR CONFLICT VERIFICATION.	

CITY OF JERSEY VILLAGE FIRE DEPARTMENT	DATE
JERSEY VILLAGE PUBLIC WORKS DEPARTMENT	DATE

7708 Riello Blvd., Suite 125
Austin, Texas 78735
Tel. (512) 299-3284 Fax. (512) 298-2592
TBP# F-14629
Garza EMC, LLC © Copyright 2024

CITY OF JERSEY VILLAGE
A TEXAS STAR COMMUNITY

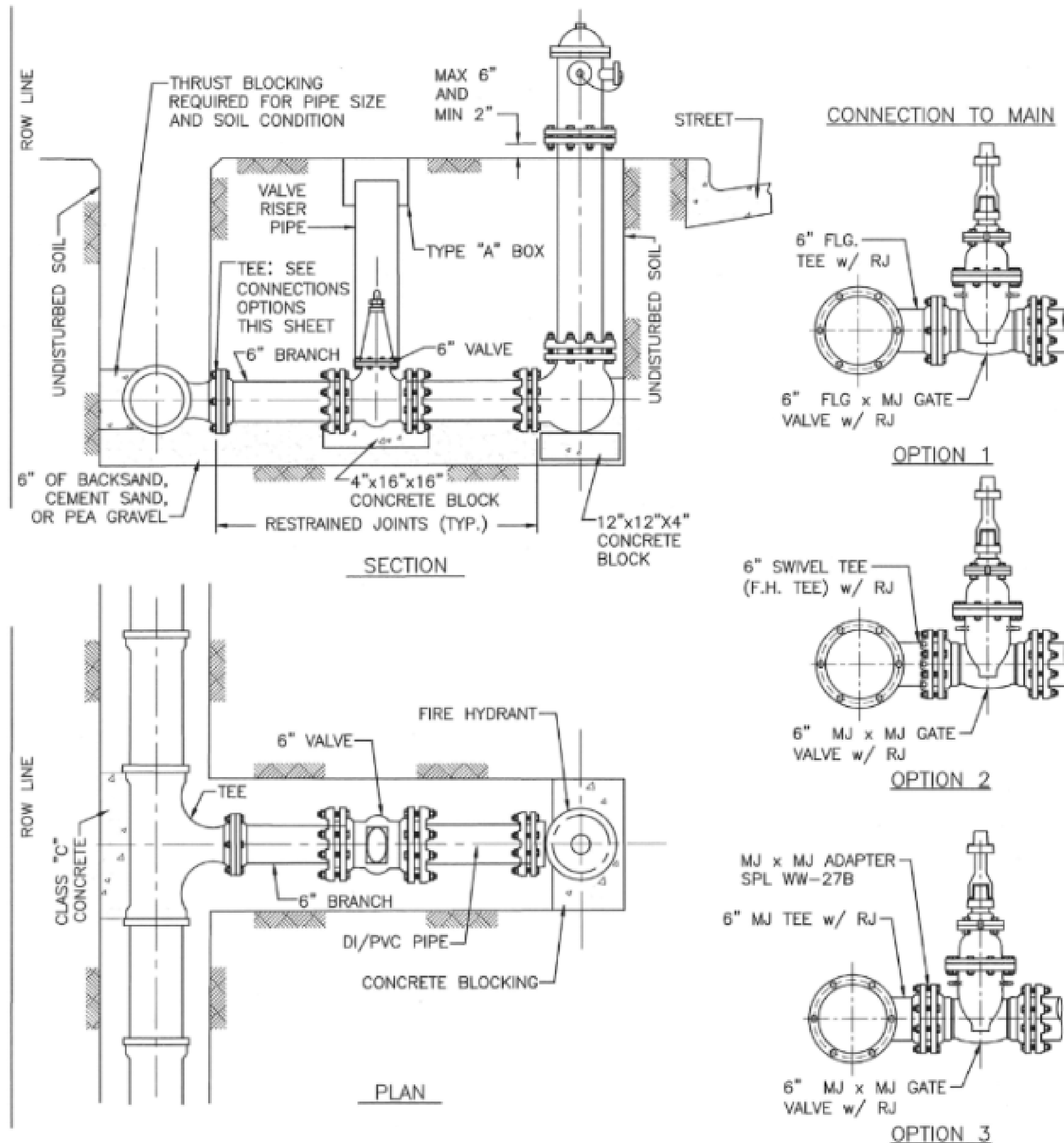
BILAL A. ALIZAN
92792
Professional Engineer
03-22-2024

CONGO LANE RECONSTRUCTION,
UTILITY & DRAINAGE IMPROVEMENTS

CITY OF JERSEY VILLAGE

DRAWN BY:	CM, RC
DESIGNED BY:	BAA, PG
QA / QC:	BAA
PROJECT NO.:	113756-00002

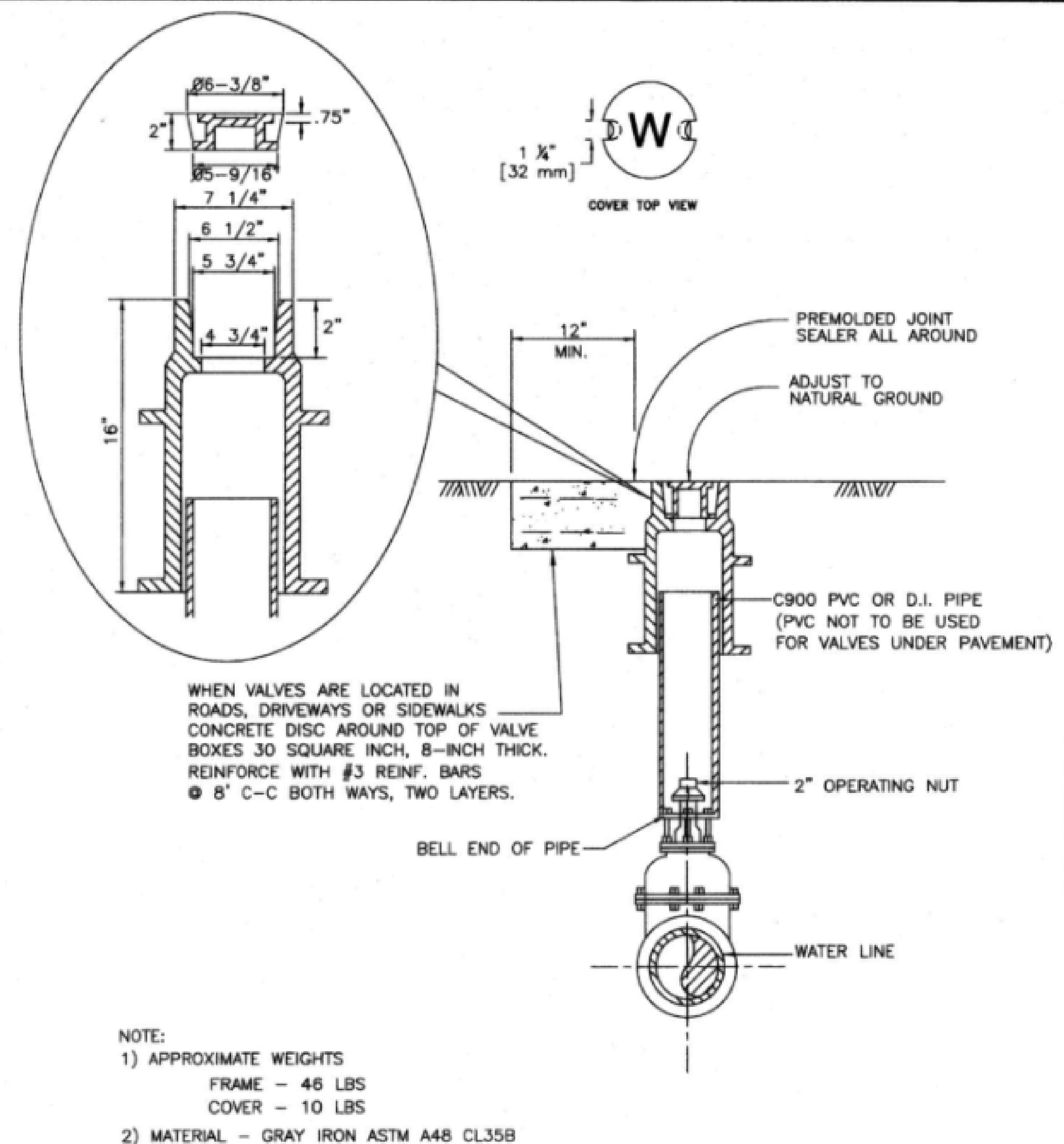
SHEET
24
OF 67



NOTES:

1. LOCATE FIRE HYDRANTS AT POINT OF CURVATURE (PC) OR POINT OF TANGENCY (PT) OF THE INTERSECTION CURB RADIUS, 3 FEET BEHIND CURB OR PROJECTED FUTURE CURB.
2. ON OPEN-DITCH ROADWAYS, SET THE FIRE HYDRANTS WITH IN 5 FEET OF RIGHT-OF-WAY LINES.
3. FIRE HYDRANT STEAMER NOZZLE SHALL FACE THE STREET.
4. LOCATE HYDRANT VALVE IMMEDIATELY ADJACENT TO WATER LINE.
5. ALL PIPING TO BE RESTRAINED JOINTS.

CITY OF HOUSTON HOUSTON PUBLIC WORKS	
STANDARD FIRE HYDRANT DETAIL	
(NOT TO SCALE)	
APPROVED BY: <i>Sushant Kanwar</i> CITY ENGINEER	APPROVED BY: <i>Paul G. Haddad</i> DIRECTOR OF HOUSTON PUBLIC WORKS
EFF DATE: JUL -01 -2021	DWG NO: 02520-01



CITY OF HOUSTON DEPARTMENT OF PUBLIC WORKS AND ENGINEERING	
VALVE BOX DETAIL	
(NOT TO SCALE)	
APPROVED BY: <i>[Signature]</i> CITY ENGINEER	APPROVED BY: <i>[Signature]</i> DIRECTOR OF PUBLIC WORKS AND ENGINEERING
EFF. DATE: JULY 01, 2010	DWG. NO: 02085-03